

NEUROENDOCRINE TUMORS PRECEPTORSHIP

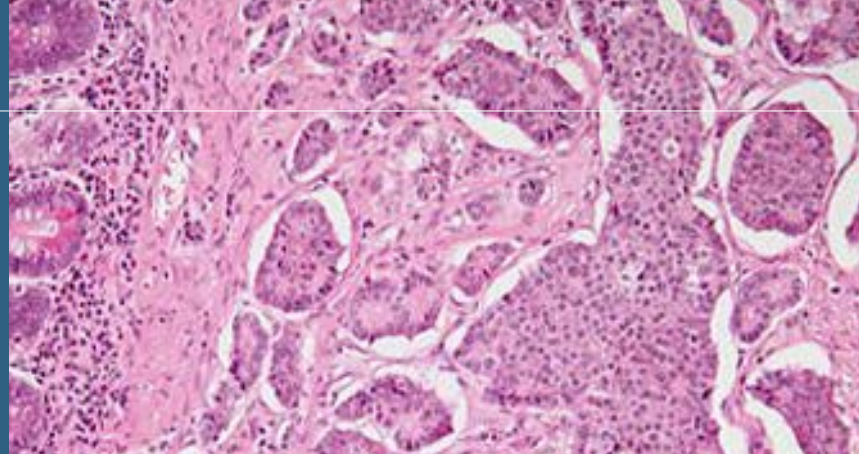
NEUROENDOCRINE TUMORS PRECEPTORSHIP

BARCELONA

17TH-18TH NOVEMBER 2016

Centro Cellex,
C/ Natzaret 115-117





NEUROENDOCRINE TUMORS PRECEPTORSHIP

BARCELONA
17TH-18TH NOVEMBER 2016

Chairs:
Eric Baudin & Jaume Capdevila

THURSDAY 17TH

14:50 - 15:00 h WELCOME & INTRODUCTION. *Jaume Capdevila*

15:00 - 16:00 h NEUROENDOCRINE NEOPLASMS CLINICAL UPDATES (10' talks)

- Advanced G1/G2 pancreatic NET: preferred sequential therapy. *Ramon Salazar*
- Advanced G1/G2 extrapancreatic NET: preferred sequential therapy. *Eric Baudin*
- Advanced G3 neuroendocrine neoplasms: there's an option for sequential therapy. *J.Capdevila*

Discussion (30')

16:00 - 16:50 h NETs SURGICAL/INTERVENTIONAL UPDATE (10' talks)

- Approach to primary surgery in pancreas and small intestine in advanced NETs. *Joaquim Balsells, Laia Blanco*
- Liver-directed therapies in resectable patients: better and safer than surgery? *L.Tselikas*

Discussion (30')

16:50 - 17:10 h Break

17:10 - 18:10 h CLINICAL RESEARCH (10' talks)

- Organization in a national task force: the GETNE experience. *Ramon Salazar*
- Phase I programs: how to take advantage in NETs field. *Jordi Rodón*
- Is lung cancer strategy applicable to lung carcinoids? *D. Planchard*

Discussion (30')

FRIDAY 18TH

9:00 - 10:20 h NETS CHARACTERIZATION (10' talks)

- Should we rebiopsy patients during the course of the disease: routine or research? *M. Ducreux*
- There are true biomarkers in NETs? *Ignacio Matos*
- Imaging challenges: RECIST modality of application in NETs. *L.Tdelikas*
- Is nuclear medicine showing micrometastases in NETs patients'? *Marc Simó*

Discussion (30')

10:20 - 10:40 h Break/coffee

10:40 - 11:40h TRANSLATIONAL RESEARCH (10' talks)

- What have we learned from "omics". *Oriol Casanovas*
- What have we learned from MTC and malignant pheochromocytoma? *S. Hescot*
- What have we learned from animal models in NETs and what we can expect for near future? *Jorge Barriuso*

Discussion (30')

11:40 - 13:00 h Hot topics in NETs (10' talks)

- Uncontrolled carcinoid syndrome. *Alexandre Teulé*
- Patient selection for PRRT. *E. Baudin*
- What really means W&S? *Jaume Capdevila*
- What is a promising signal of antitumor activity in early phase I-II trials focused in NETs field? *J. Hadoux*

Discussion (30')

13:00 - 14:30 h Lunch

14:30 - 16:30 h TOUR NET-DIRECTED LABS (PIs talks onsite)

- Genomics lab. *Deborah Grazia*
- Cancer stem cell lab. *Hector G.Palmer*
- Animal models. *Daniel Massó*